

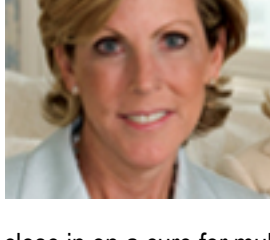
MMRF FastFacts

A monthly e-newsletter



Dear Friends,

Working with academia, clinicians, and industry — and supported by your generous funding — we have taken powerful steps to



quickly close treatment gaps and powerful steps to close in on a cure for multiple myeloma. Together, we have accelerated the clinical trial development of some of the most promising next-generation treatments, such as carfilzomib and pomalidomide. Yet even as we focus on advancing these and other promising next-generation treatments, your help is still urgently needed. Help us accelerate the countdown of our 3, 2, 1: Cure research campaign by making a powerful contribution today. Read more about our [research campaign](#).

Warmest regards,

Kathy Giusti

P.S. We value your feedback – [please let us know what you think](#).

Clinical Trials

Study of Oral MLN9708 in Adult Patients with Relapsed and Refractory Multiple Myeloma

[More >](#)

A Study of the Safety and Effectiveness of CNTO 328 When Added to Velcade-Melphalan-Prednisone in Patients with Multiple Myeloma

[More >](#)

Study to Determine Efficacy and Safety of Lenalidomide Plus Low-dose Dexamethasone Versus Melphalan, Prednisone, Thalidomide in Patients with Previously Untreated Multiple Myeloma (FIRST)

[More >](#)

Expert Insights

Dr. Sergio Giral and Dr. Sagar Lonial recap exciting new data from multiple myeloma trials presented at this year's annual ASCO meeting. If you missed the live teleconference, [listen to the archive on our web site](#).

[LISTEN NOW](#)

Share: [in](#) [f](#) [t](#) [✉](#)

MMRF Clinical Insights

Learn about myeloma treatment options. Join us at our upcoming patient education program Fri. Oct. 15, in Houston. For more information, email [Sara Tyghter](mailto:Sara.Tyghter) or call 203.652.0219.

[REGISTER NOW](#)

Share: [in](#) [f](#) [t](#) [✉](#)

Get Involved

MMRF Fall Gala

Register now! The 14th Annual MMRF Fall Gala will be held Sat., Oct. 30, at the Hyatt Regency Greenwich in Old Greenwich, CT. Famed Pianist and Vocalist Diana Krall will perform as the event's featured artist and will be joined by legendary singer and songwriter Paul Simon. Deborah Norville, Emmy Award winning broadcast journalist, will serve as mistress of ceremonies. For more information, email mmrf@benefitoffice.org.

[PURCHASE TICKETS](#)

Share: [in](#) [f](#) [t](#) [✉](#)

MMRF Race for Research Fall Series

Join us for the MMRF Race for Research Fall Series taking place in Boston (9/25), Twin Cities (9/26), Chicago (10/02), and Philadelphia (10/02). Register today & start your fundraising now! For more information, email aces@themmr.org.

[JOIN NOW](#)

Share: [in](#) [f](#) [t](#) [✉](#)

MMRF Store

Purchase apparel or jewelry from the MMRF as a gift to say thank you or to recognize a special occasion, and support our mission in style.

[SHOP NOW](#)

Share: [in](#) [f](#) [t](#) [✉](#)

Breaking News

Astex and Multiple Myeloma Research Consortium (MMRC) Announce Start of Phase II Clinical Study of AT7519 in Multiple Myeloma

Astex Therapeutics, the UK-based biotechnology company developing targeted therapies for oncology and virology, and the Multiple Myeloma Research Consortium (MMRC) announced the initiation of a Phase II clinical trial of the cyclin-dependent kinase (CDK) inhibitor, AT7519, to treat patients with relapsed or refractory multiple myeloma. The trial is designed to investigate both single agent and combination activity of AT7519 with bortezomib (Velcade®). [More >](#)

Share: [in](#) [f](#) [t](#) [✉](#)

MMRF Welcomes Nodality President and CEO David Parkinson, M.D. to Board of Directors

MMRF announced that David Parkinson, M.D. President and CEO of Nodality, Inc. has joined its Board of Directors. Nodality is a San Francisco-based biotechnology company developing next-generation diagnostics in oncology and auto-immune diseases to enable more personalized treatment approaches. [More >](#)

Share: [in](#) [f](#) [t](#) [✉](#)

2009 Donor Progress Report Released

Thanks to the generosity of our donors, we reached incredible milestones in the treatment of multiple myeloma in 2009, including: being the first to map the entire multiple myeloma genome, opening six new clinical trials through the MMRC, and surpassing the industry standard with how quickly our trials are opened. Read more about the accomplishments you have helped us achieve in our [2009 Donor Progress Report](#). [More >](#)

Share: [in](#) [f](#) [t](#) [✉](#)

Stand Up to Cancer

The MMRF is proud to unite with [Stand Up To Cancer](#) to raise awareness and funds for cancer research. MMRF Founder & CEO Kathy Giusti is honored to serve on the Management Committee and Advocate Advisory Council. Please tune in on Friday September 10th at 8:00pm EST to ABC, CBS, FOX or NBC for the live television broadcast and look out for our COO, Walter Capone, who will be in attendance. [More >](#)

Share: [in](#) [f](#) [t](#) [✉](#)

Research Updates

Treatment of patients with relapsed/refractory multiple myeloma with lenalidomide and dexamethasone with or without bortezomib: prospective evaluation of the impact of cytogenetic abnormalities and of previous therapies. [More >](#)

Dimopoulos MA, Kastritis E, Christoulas D, Migkou M, Gavriatopoulou M, Gkotzamanidou M, Iakovaki M, Matsouka C, Mparmparoussi D, Roussou M, Efsthathiou E, Terpos E.

Leukemia. 2010 Aug 26. [Epub ahead of print]

Bortezomib, melphalan, and prednisone versus bortezomib, thalidomide, and prednisone as induction therapy followed by maintenance treatment with bortezomib and thalidomide versus bortezomib and prednisone in elderly patients with untreated multiple myeloma: a randomised trial. [More >](#)

Mateos MV, Oriol A, Martínez-López J, Gutiérrez N, Teruel AI, de Paz R, García-Laraña J, Bengoechea E, Martín A, Mediavilla JD, Palomera L, de Arriba F, González Y, Hernández JM, Sureda A, Bello JL, Bargay J, Peñalver FJ, Ribera JM, Martín-Mateos ML, García-Sanz R, Cibeira MT, Ramos ML, Vidriales MB, Paiva B, Montalbán MA, Lahuerta JJ, Bladé J, Miguel JF.

Lancet Oncol. 2010 Aug 23. [Epub ahead of print]

A Phase I/II trial combining high dose melphalan and autologous transplant with bortezomib for multiple myeloma: A dose and schedule finding study. [More >](#)

Lonial S, Kaufman J, Tighiouart M, Nooka A, Langston A, Heffner LT, Torre C, McMillan S, Renfro H, Harvey RD, Lechowicz MJ, Khoury HJ, Flowers C, Waller EK.

Clin Cancer Res. 2010 Aug 25. [Epub ahead of print]

Optimising bortezomib in newly diagnosed multiple myeloma. [More >](#)

Rajkumar SV.

Lancet Oncol. 2010 Aug 23. [Epub ahead of print]

Combination therapy of bortezomib with novel targeted agents: an emerging treatment strategy. [More >](#)

Wright JJ.

Clin Cancer Res. 2010 Aug 15;16(16):4094-104. Epub 2010 Aug 3.

Multiple Myeloma Research Foundation • 203.229.0464 • info@themmr.org

383 Main Avenue, 5th Floor, Norwalk, CT 06851

